

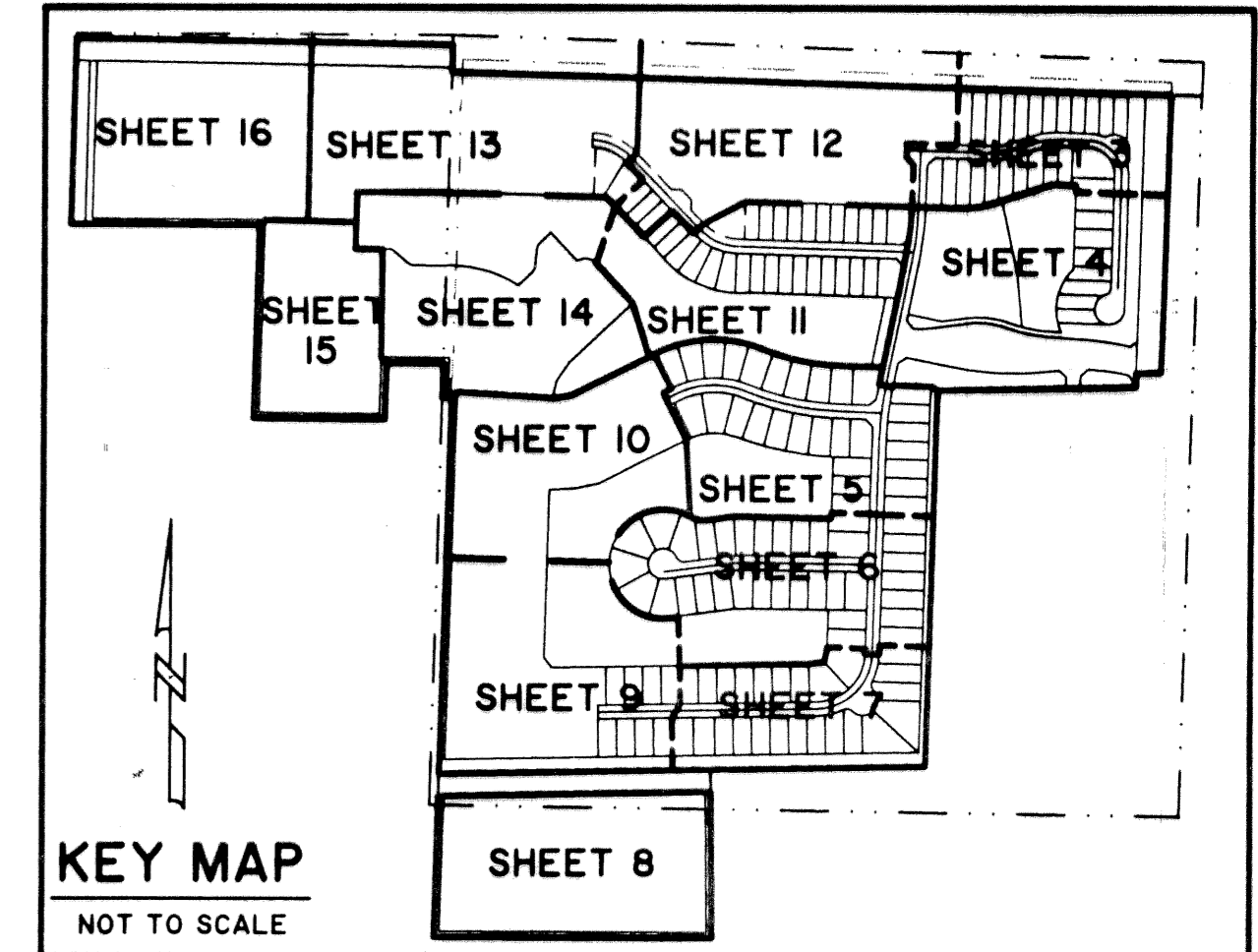
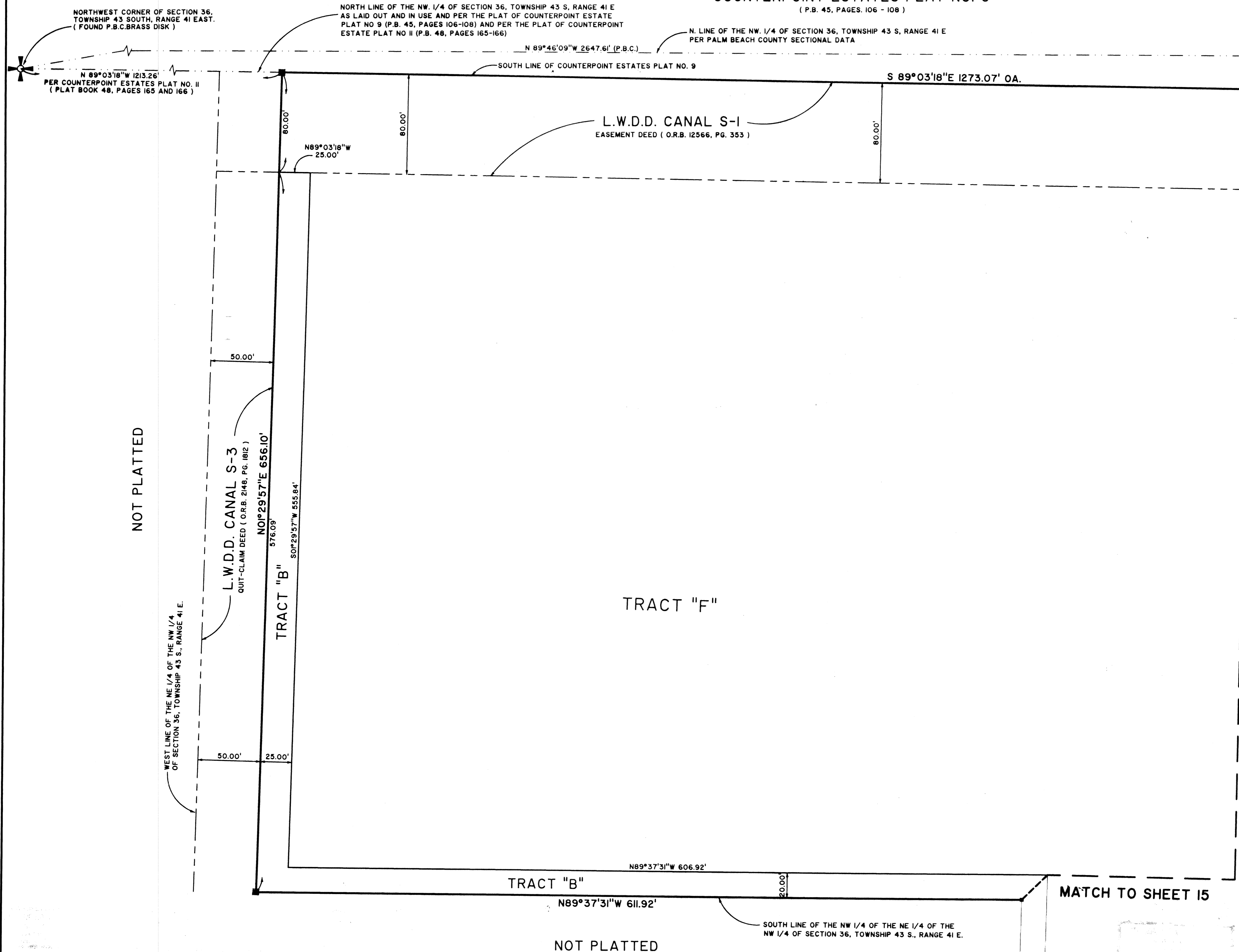
BELLA TERRA P.U.D. PLAT NO. 1

BEING A REPLAT OF A PORTION OF BLOCK 9, PALM BEACH FARMS COMPANY PLAT NO. 3, AS RECORDED IN PLAT BOOK 2, PAGES 45 THROUGH 54, PUBLIC RECORDS OF PALM BEACH COUNTY, FLORIDA AND A PORTION OF SECTION 36, TOWNSHIP 43 SOUTH RANGE 41 EAST, VILLAGE OF ROYAL PALM BEACH, PALM BEACH COUNTY, FLORIDA.
 FEBRUARY, 2002 SHEET 16 OF 16

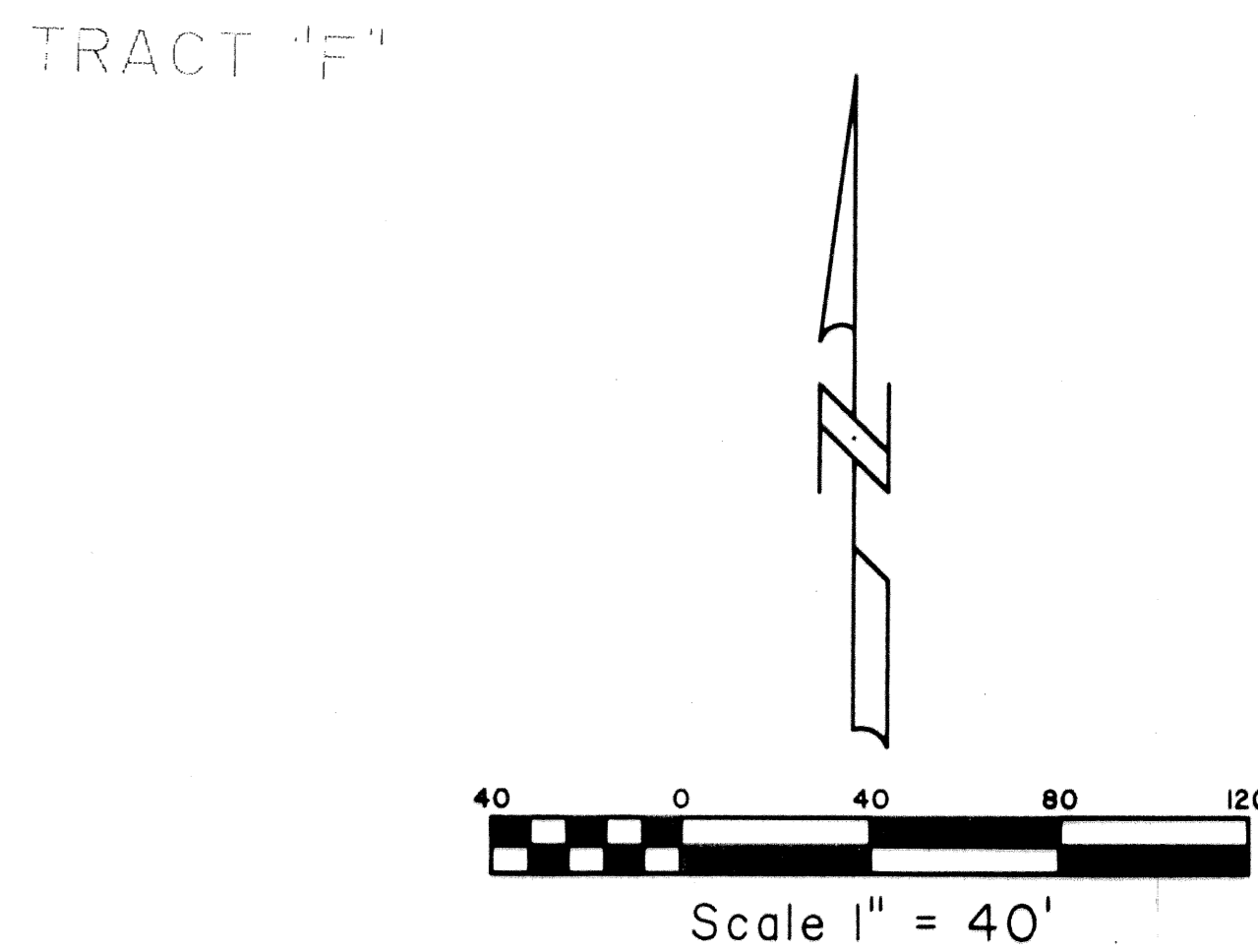
STATE OF FLORIDA SS
 COUNTY OF PALM BEACH
 THIS PLAT WAS FILED FOR RECORD AT _____
 M. THIS _____ DAY OF _____ 2002
 AND DULY RECORDED IN PLAT BOOK NO. _____
 ON PAGE _____
 DOROTHY H. WILKEN, CLERK OF THE CIRCUIT COURT
 BY _____ D.C.

COUNTERPOINT ESTATES PLAT NO. 9

(P.B. 45, PAGES 106 - 108)



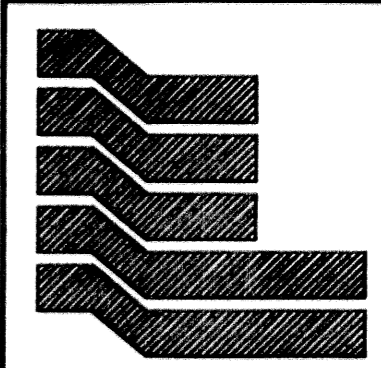
MATCH TO SHEET 13



NOT PLATTED

NOT PLATTED

MATCH TO SHEET 15



Landmark Surveying & Mapping Inc.
 1850 Forest Hill Boulevard
 Ph. (561) 433-5405 Suite 100 W.P.B. Florida
 LB # 4396

BELLA TERRA P.U.D. PLAT NO. 1